

OTIZ

OTIZ

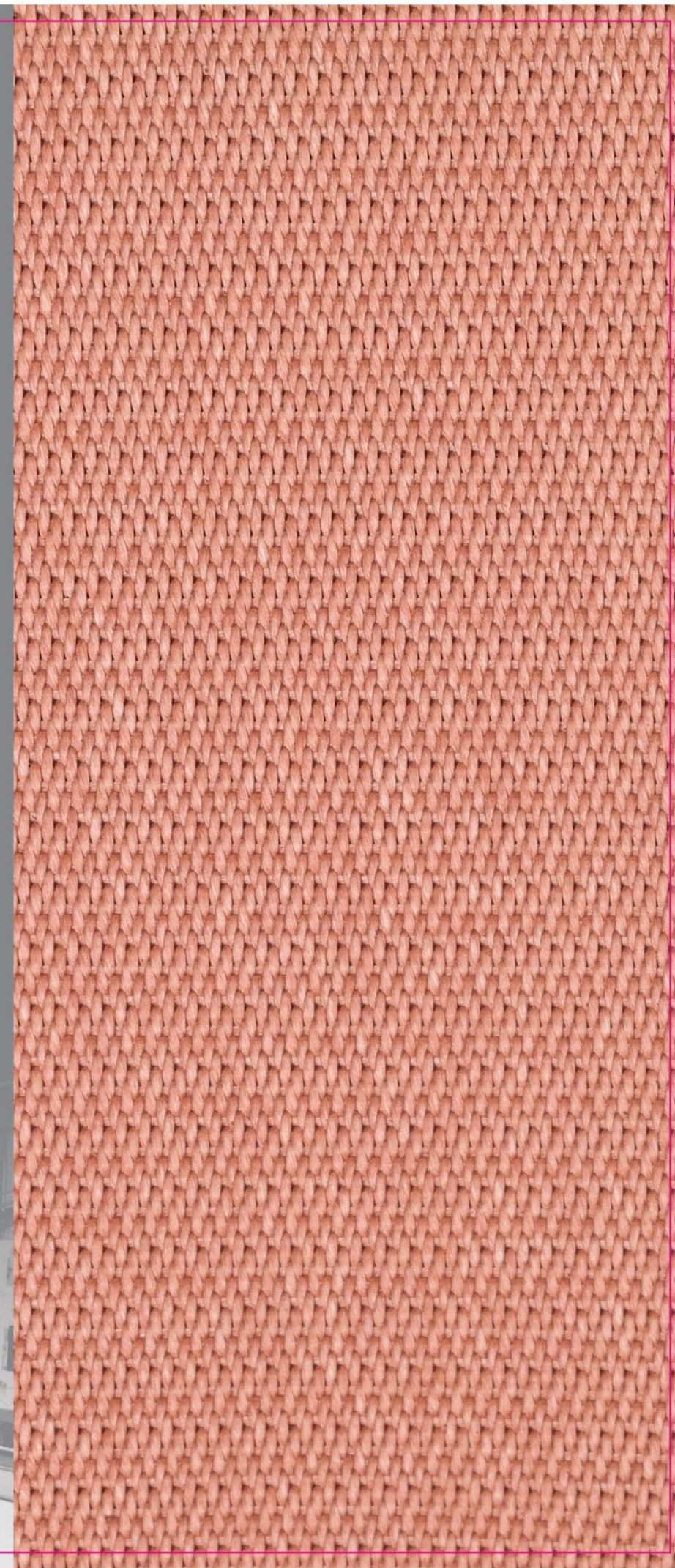
工业用输送带
基布产品册

Conveyor Belt Fabric
Mechanical Reinforcement Goods

亚东工业(苏州)有限公司
苏州市吴中经济开发区尹中南路1688号

ORIENTAL INDUSTRIES (SUZHOU) LTD.
1688 Yinzhou South Road, Wuzhong Economic
Development District, Suzhou, P.R.China

TEL: +86 512 6595 1888 ext: 8817, 8827
Fax: +86 512 6596 5198
网址URL: www.otiz.com.cn





工业布 事业群简介

Conveyor Belt Fabric MRG SBU Introduction

- ▶ 亚东工业是全球知名的产业用纺织品制造商，其产品范围涵盖所有适用于工业制品的胚布及浸胶帆布，包括输送带、建筑用、地工等工业骨架材。

OTIZ is a globally known manufacturer of Technical Textile with product range of PET chip、 industrial yarn、 greige and RFL treated fabrics. The products are widely use in light/heavy weight conveyor belting industries with applications to any industrial reinforcement usage.

- ▶ 亚东工业产品可被广泛的运用于各种用途，不仅符合一般市场商品，也能为客户特殊需求而量身打造。

亚东工业可根据客户需求，提供适用的解决方案，把客户的构想和设计转化成各项实际而多元的产品，原材料方面，具备能力可把涤纶长/短纤丝、锦纶，甚至导电丝和交织纱都织造于帆布之中。

以拥有着先进的生产设备、专业的员工及优秀的研发团队，我们的织造能力，最重帆布可达4,000克/平方米，最大胚布幅宽可达3,800mm，浸胶布最大幅宽可达2,300mm。为此，我们已成为世界级工业制造商的长期而可靠的供应伙伴。

OTIZ supplies customize products that suits the specific needs with utilizing material of polyester filament, polyester spun filament, monofilament, nylon(66), aramid or hybrid yarns to weave fabrics up to 4,000g/sqm. (with width up to 3,800mm for greige, 2,300mm for RFL treated fabrics.)

OTIZ is equipped with state-of-the-art equipment, professional technicians and excellent R&D team together with flexible supplying chain and vertical integration control system, we are confident to fulfill customers' requirements with professional sales service team and reliable trade names.



胚布

TECHNICAL DATASHEET SPECIALTY FABRICS

胚布

TECHNICAL DATASHEET SPECIALTY FABRICS

► 特性:

具备高强度可供PVC整芯带,或橡胶带粘合

► Characteristics:

- high tenacity for PVC canvas or Rubber belt

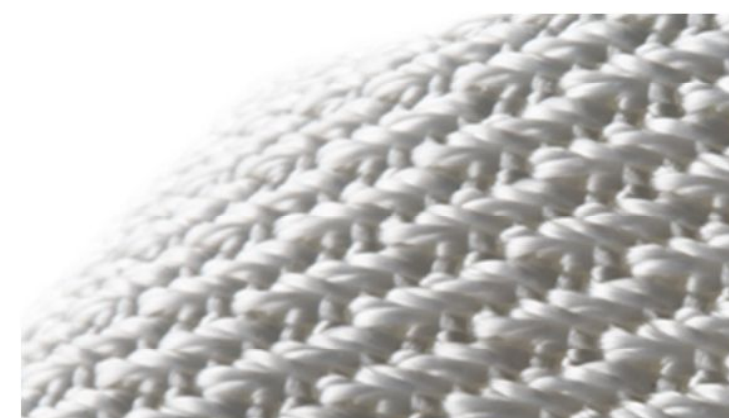
► 用途:

输送带骨架材

► Applications:

- Conveyor Belt.

Application		Light weight belt		Tarpauline	Logistic	Solid woven conveyor belt
Material	Warp	Polyester Polyamide 6.6 Aramid	Polyester Polyamide 6.6 Aramid	Polyester Polyamide 6.6	Spun Polyester	Spun Polyester Polyester filament Polyamide 6.6 Cotton
	Weft		monofilament			
Weight (g/m ²)		255~710	225~715	110~660	660~2860	1700~4000
Thickness (mm)		0.45~1.1	0.45~1.25	0.15~1.0	1.1~5.5	3.5~12.0
Remark			Monofil ø0.2~ø0.5			



Solid Woven fabrics

Material: Spun Polyester, Polyester filament, Polyamide 6.6
Cotton

Weight: 1700~4000 g/m2

Application: Solid Woven Conveyor belt

Specialty Fabrics

Material: Polyester, Polyamid 6.6, Monofilament

Weight: 110~660 g/m2

Finishing: Heat set, loom state

Application: Membranes, Tarpaulins, Inflatable boats, etc..



Drop Thread fabrics

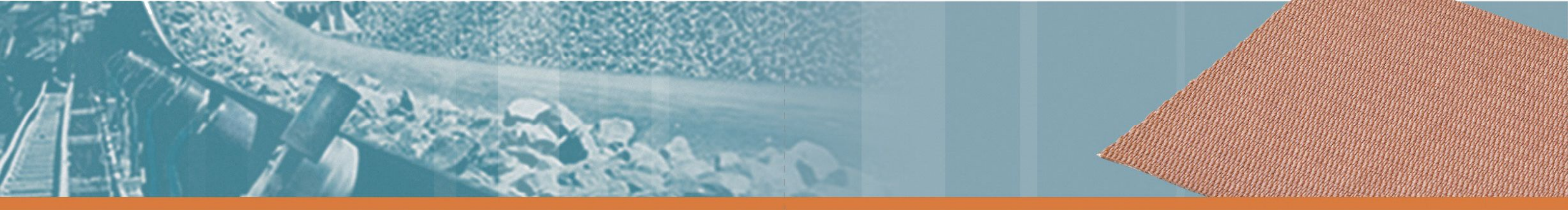
Material: Polyester

Height: up to 100cm

Width: up to 200cm

浸胶布

TECHNICAL DATASHEET
CONVEYOR BELT FABRICS



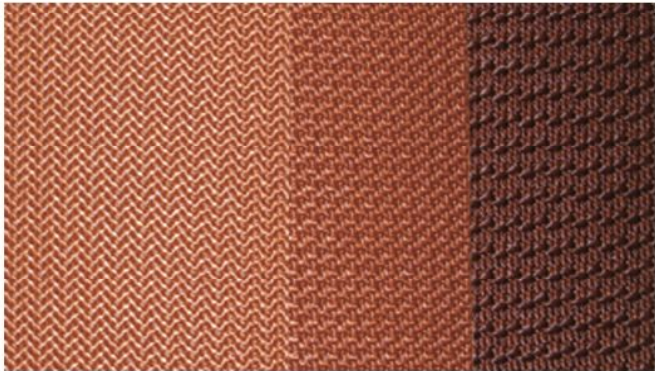
- 特性:
- 具备高强度、低定负荷伸长率、
经向高卷曲率、低干热伸长率、
高粘合强度。
- Characteristics:
- Stability with High Breaking Strength、
Low EASL、High Warp Crimp Ratio、
Low shrinkage、High adhesion.

- 用途:
- 煤矿、发电厂、水泥厂、石矿场
等叠层橡胶输送带骨架材。
- Applications:
- Colliery、Power Plant、Cement Mill、
Stope etc. Multiply Rubber Conveyor Belt.

Class Range	Raw Materials	Tensile strength		Weight g/m2	Thickness mm	Pattern	Width mm
		Warp	Weft				
EP80~EP800	Polyester Polyamide 6.6	100~920	—	325~2890	0.5~3.6	Plain	40mm-2200mm
EE70~EE630	Polyester	75~700	—	220~2240	0.40~2.75	Oxford Broken	
NN100~NN550	Polyamide 6.6	130~640	—	320~1300	0.55~1.65	Twill	
EM35~EM200	Polyester Monofilament	100~240	35~180	300~1080	0.5~1.28	Panama	
50LN~500LN	Polyamide 6.6	—	50~400	215~990	0.7~2.2	Straight warp	
SW315~SW1600	Polyester Polyamide 6.6	420~1800	—	1330~4500	2.0~5.2	Leno	
DPP350~DPP4000	Aramid Polyamide 6.6	420~4400	—	940~4200	1.6~5.2	Double weave	
Technical Feasibilities	Material: Polyester / Polyamide 6.6/ Aramid /Basalt/ Spun polyester / monofilament / Carbon black yarn Finishing: RFL (NBR, CR, SBR, CSM) RF free. Width: up to 4.6m greige up to 2.2 dipping treated up to 3.6m heat set						

浸胶布

TECHNICAL DATASHEET
CONVEYOR BELT FABRICS

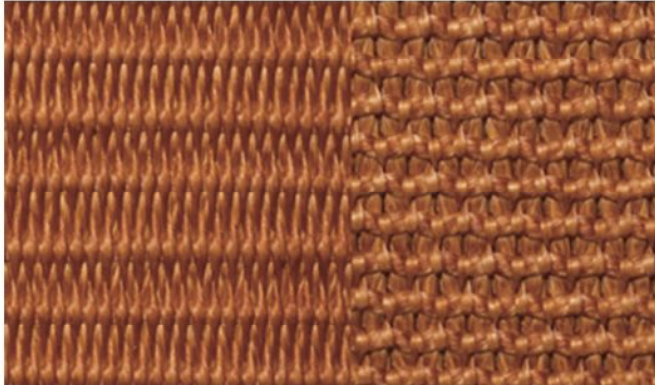


Treated Fabrics

- Material: Polyester / Polyamide 6.6
- Class: EP80~EP800
EE70~EE630
NN100~NN550
- Treatment: RFL(NBR, CR, SBR, CSM), RF free.
- Application: Conveyor belts

Weft Rigid Fabrics

- Material: Polyester /Monofilament
- Class: EM35~EM200
- Treatment: RFL
- Application: Conveyor belts



DPP Fabrics & Straight Warp Fabrics

- Material: Polyester / Polyamide 6.6/Aramid
- Class: DPP350~DPP4000
SW315~SW1600
- Treatment: RFL
- Application: Conveyor belts